

# HACKNEY EDUCATION SERVICES FOR SCHOOLS

Price List 2024/25




Hackney Education is a trusted provider of high quality services for the education sector across London and beyond.

Our ethos of working for every child is reflected in our record of continued attainment in schools. We are proud that Hackney regularly appears in the top local authorities for educational performance.



## Accessibility statement

If you need any information on this brochure in a different format please email

 [s4s@hackney.gov.uk](mailto:s4s@hackney.gov.uk)

We'll consider your request and get back to you in 5 working days.

# CONTENTS

## **Business Services** 4

---

- Human Resources
- School Finance
- MIS Support
- Legal Services
- Payroll
- Procurement

## **Additional Business Services** 7

---

- Staff Absence Protection
- GDPR Support
- Disclosure Barring Service (DBS)
- Hackney eSchools
- Tomlinson Centre
- Property Services
- Health and Safety in Schools

## **Pupil Support Services** 10

---

- Attendance Service
- Integrated SEND Support
- Pupil Benefits

## **Additional Pupil Support Services** 13

---

- Admissions
- School Transport
- Speech and Language Therapy Services
- Kench Hill Residential Centre
- Children's Occupational Therapy Services
- Children's Physiotherapy Service

## **School Improvement Services** 17

---

- Primary and Secondary Support
- Reading Programmes
- Post-16
- Governance Services
- Music Services
- Early Years Support
- Hackney Forest School

## **Additional School Improvement Services** 23

---

- Primary and Secondary Careers and Employability
- Resources

## **Professional Training** 24

---

- Continuing Professional Development (CPD)
- Early Career Teachers (ECT) Support

## **How To Order** 25

---

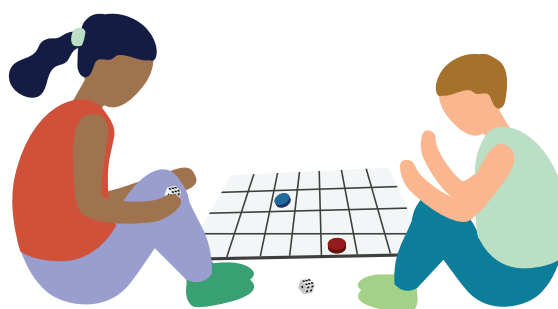
## **CPD Booking Information** 25

---

## Price List 2024/25

The services listed in this publication are not exhaustive and the full range of our services can be found on our services for schools website.

 [www.hackneyservicesforschools.co.uk](http://www.hackneyservicesforschools.co.uk)



# BUSINESS SERVICES

## Human Resources

Access the support you need to resolve issues, develop robust procedures and facilitate efficiencies. Our range of HR support services (including employment legal services) are priced competitively and have no hidden charges. They are available to help your school save time, stay compliant and develop outstanding HR practice.

Product Code	Service	Price
05/HR/001	HR Service Package Primary Schools 1–1.5 form entry – 10 days	£4,665
05/HR/002	HR Service Package Primary Schools 2–3 form entry – 14 days	£6,535
05/HR/007	HR Service Package Secondary School up to 800 pupils – 16 days	£7,465
05/HR/008	HR Service Package Secondary School (800+ pupils) – 19 days	£8,670
05/HR/024	HR Recruitment – Single Vacancy Placement	£83
05/HR/037	Bespoke HR Training	From £214 per session
05/HR/038	HR Mediation Support	£550 per day
05/HR/044	Headteacher Recruitment Support	£850*
05/HR/045	HR Policy Package	£650

\*additional charges will apply for marketing and TES recruitment campaigns

[www.hackneyservicesforschools.co.uk/categories/human-resources-and-dbs](http://www.hackneyservicesforschools.co.uk/categories/human-resources-and-dbs)

T: 020 8820 7317 or 7367

E: [education.hr@hackney.gov.uk](mailto:education.hr@hackney.gov.uk)



***“We’ve used the HR service for many years and the team have always delivered a great service with excellent communication and speedy responses. Invaluable service and resource, we cannot recommend highly enough.”***

Marsha Mollineau, School Business Manager,  
Oakhill Community School, Hackney



## School Finance

It's never been more important to get a grip on school finances. Our experienced school finance and bursarial experts can help you to minimise your risks, introduce robust monitoring, comply with legislation, forecast budgets and manage variations and contracts. Get real time practical support to meet all your financial deadlines and statutory requirements, including interim support in the event of your Bursar's absence.

Product Code	Service	Price
03/FIN/001	School Finance Support Level 1 – (3 days per year)	£3,095
03/FIN/017	School Finance Support Level 2 – (6 days per year)	£4,510
03/FIN/002	School Finance Support Level 3 – (16 days per year)	£7,445
03/FIN/005	Bursar Service – 1 day per month over 10 months	£5,640
03/FIN/006	Bursar Service – 2 days per month over 10 months	£11,150
03/FIN/007	Bursar Service – 3 days per month over 10 months	£16,555
03/FIN/008	Bursar Service – 4 days per month over 10 months	£21,915

[www.hackneyservicesforschools.co.uk/categories/school-finance](http://www.hackneyservicesforschools.co.uk/categories/school-finance)

T: 020 8820 7566

E: [schools.finance@hackney.gov.uk](mailto:schools.finance@hackney.gov.uk)

## MIS Support

Your management information system (MIS) is central to the effective running of your school. Our selection of MIS support services ensure that your staff stay updated and fully operational, helping you make critical decisions that can lead to school improvement.

Product Code	Service	Price
<b>SIMS Support</b>		
01/ICT/020	SIMS Support Package (Primary and Special Schools)	POA
01/ICT/022	SIMS Support Package (Secondary Schools)	POA
01/ICT/026	SIMS Dinner Money	£250
01/ICT/027	SIMS Reports	£100
01/ICT/030	SIMS FMS Bacs Remittances and Maintenance	£250
01/ICT/066	SIMS & FMS Server Migrations	POA
<b>Other MIS Support</b>		
01/ICT/051	Arbor Support Package (Primary and Special Schools)	POA
01/ICT/057	BromCom Support Package (Primary and Special Schools)	POA

[www.hackneyservicesforschools.co.uk/categories/mis-services](http://www.hackneyservicesforschools.co.uk/categories/mis-services)

E: [mis.support@hackney.gov.uk](mailto:mis.support@hackney.gov.uk)



# Legal Services

**Available to Hackney schools only**

Hackney Legal Services has a highly experienced in-house team of legal experts. Specialists in working with schools, we understand the wide range of legal issues your school may face. Our flexible, responsive and cost effective service means that governing boards and senior leaders can operate with confidence.

Product Code	Service	Price
07/LEG/001	Annual Education Law Legal Subscription – 5 hours	£663
07/LEG/002	Annual Education Law Legal Subscription – 10 hours	£1,215
07/LEG/005	Annual Full Range Legal Subscription – 5 Hours	£885
07/LEG/006	Annual Full Range Legal Subscription – 10 hours	£1,435

[www.hackneyservicesforschools.co.uk/categories/legal-services](http://www.hackneyservicesforschools.co.uk/categories/legal-services)

T: 020 8356 2930

E: [tlf.s4s@hackney.gov.uk](mailto:tlf.s4s@hackney.gov.uk)

# Payroll

Paying staff the right amount at the right time is critical to the smooth running of your school. For that to happen there needs to be solid systems and efficient processes in place. We are experts at navigating the complexities of payroll and the different terms and conditions of your teaching and support staff.

Product Code	Service	Price
06/PAY/001	Payroll Processing (per payslip)	£4.75 per payslip
06/PAY/003	Teachers Pension Administration Primary 1–1.5 Form Entry	£530
06/PAY/004	Teachers Pension Administration Primary 2+ Form Entry	£633
06/PAY/005	Teachers Pension Administration (secondary)	£736

[www.hackneyservicesforschools.co.uk/categories/payroll](http://www.hackneyservicesforschools.co.uk/categories/payroll)

T: 020 8820 7697

E: [schools.payroll@hackney.gov.uk](mailto:schools.payroll@hackney.gov.uk)

# Procurement

The School Financial Value Statement (SFVS) requires schools to regularly benchmark their expenditure against similar schools and investigate where spend appears to be high. Maximise your budget and neutralise the risk of any legal challenges, financial penalties or damage to your school's reputation.

Product Code	Service	Price
03/FIN/009	Basic Procurement Package	£820

[www.hackneyservicesforschools.co.uk/categories/procurement](http://www.hackneyservicesforschools.co.uk/categories/procurement)

E: [procurement.education@hackney.gov.uk](mailto:procurement.education@hackney.gov.uk)

## **ADDITIONAL BUSINESS SERVICES**

### **Staff Absence Protection**

Hackney has partnered with Education Mutual who are schools-led and run solely for the benefit of members, with contributions used to settle claims and support people in their time of need.

By joining Education Mutual you will have the flexibility to design your own staff absence cover to your exact school needs. This can include existing and ongoing absences, planned surgeries all supported by their fast-track health cover services.

**[www.hackneyservicesforschools.co.uk/product/staff-absence-protection](http://www.hackneyservicesforschools.co.uk/product/staff-absence-protection)**

**T: 020 8820 7566**

**E: [s4s@hackney.gov.uk](mailto:s4s@hackney.gov.uk)**

### **GDPR Support**

It's vital that all personal data is protected and handled in line with the current legislation. Our partner, Shard Business Services, gives you the expertise and tools you need to be compliant with the latest regulations.

You can choose the level of service to suit your needs. A one-off audit can highlight areas for improvement. Alternatively, a Data Protection Officer can provide more in depth support on issues including GDPR and freedom of information requests, investigating and reporting data breaches, writing policies and training staff.

**[www.hackneyservicesforschools.co.uk/categories/gdpr](http://www.hackneyservicesforschools.co.uk/categories/gdpr)**

**T: 020 8820 7566**

**E: [s4s@hackney.gov.uk](mailto:s4s@hackney.gov.uk)**

### **Disclosure Barring Service (DBS)**

As a registered Umbrella Body for the Disclosure and Barring Service (DBS) we can process DBS checks on behalf of your business or organisation.

Our aim is to make things as easy as possible for you through our efficient and simple to use online service which eliminates all unwieldy paper to ensure a faster, safer process that will save you time and money. Standard checks are £18 and enhanced checks are £38, plus an administration fee from £10 for schools.

**[www.hackneyservicesforschools.co.uk/product/dbs-checks-standard-and-enhanced](http://www.hackneyservicesforschools.co.uk/product/dbs-checks-standard-and-enhanced)**

**T: 020 8820 7301**

**E: [hackneyeducation.dbs@hackney.gov.uk](mailto:hackneyeducation.dbs@hackney.gov.uk)**



## Hackney eSchools

Hackney eSchools combines a user-friendly school website that is beautifully designed to match your school's branding and ethos together with a host of communication and learning tools. This minimises the need for multiple online services, saving you huge amounts of time and money on a day-to-day basis. Hackney eSchools can design a website built specifically for schools providing individual designs that match your school's ethos. Websites start from £900.

[www.hackneyservicesforschools.co.uk/product/hackney-eschools](http://www.hackneyservicesforschools.co.uk/product/hackney-eschools)

T: 020 8820 7566

E: [s4s@hackney.gov.uk](mailto:s4s@hackney.gov.uk)

## The Tomlinson Centre

A professional training centre in east London with light and spacious IT equipped rooms available from £120.

The Tomlinson Centre is conveniently located in the heart of Hackney with excellent transport links and very competitively priced. We can also offer on site catering, live streaming facilities, a podcasting studio, a video filming and editing service, and conferencing for up to 160 seated delegates with break out rooms and a range of hospitality options.

Perfect for an out-of-school meeting, hearing, work event, broadcast or a private function, do arrange a visit and we will happily show you around.

Hackney schools will receive a 25% discount off published prices.

[www.thetomlinsoncentre.co.uk](http://www.thetomlinsoncentre.co.uk)

T: 020 3076 1500

E: [info.tomlinsoncentre@hackney.gov.uk](mailto:info.tomlinsoncentre@hackney.gov.uk)





# Property Service

**Available to Hackney schools only**

We have extensive experience and skills in managing school building and capital projects. Our aim is to ensure the whole school community operates in a safe and suitable environment, that you are aware of and comply with statutory obligations and that you save time and costs through structured project planning to achieve your overall objectives.

[www.hackneyservicesforschools.co.uk/categories/property-services](http://www.hackneyservicesforschools.co.uk/categories/property-services)

T: 020 8356 5792

E: [PMO.educationproperty@hackney.gov.uk](mailto:PMO.educationproperty@hackney.gov.uk)

# Health and Safety in Schools\*

**Available to Hackney schools only**

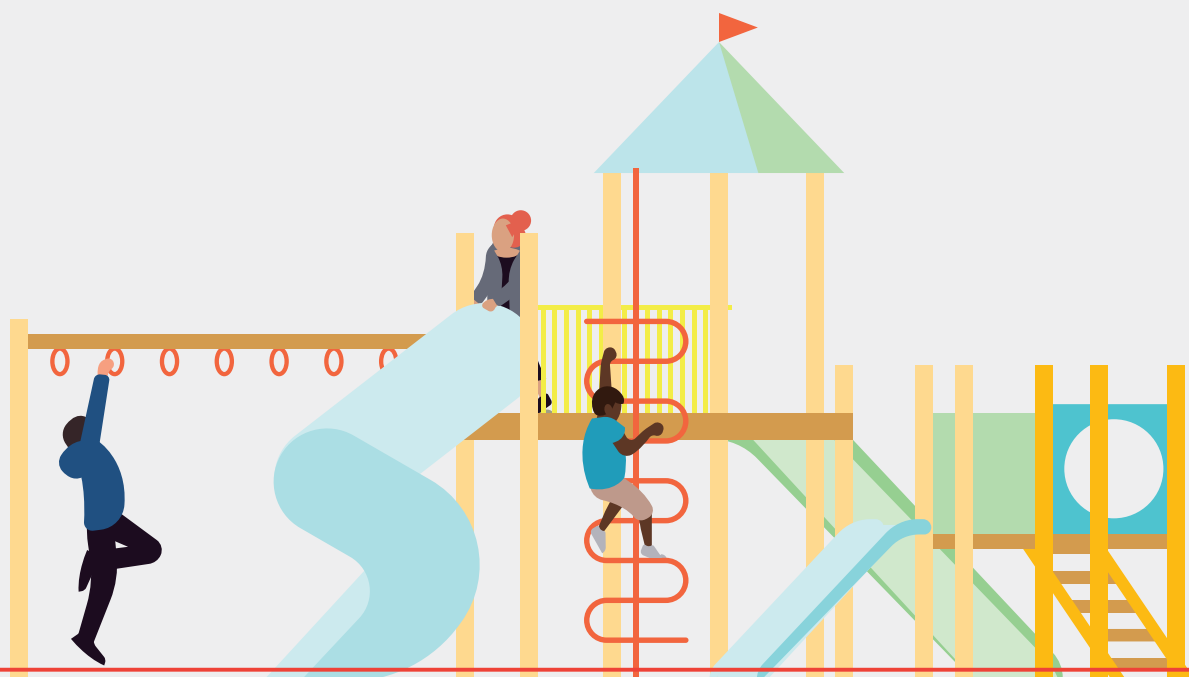
Getting Health and Safety wrong can be serious and expensive, so it is important to ensure that it is managed properly at all times. We will work in partnership with you to provide a safe environment where staff can work and pupils can learn and play. We can help you minimise risks, give clear guidance on formal policies / statutory duties and prevent future issues and costs.

\*basic health and safety support is provided free of charge to Hackney maintained schools

[www.hackneyservicesforschools.co.uk/extranet/health-and-safety-schools](http://www.hackneyservicesforschools.co.uk/extranet/health-and-safety-schools)

T: 020 8356 2280

E: [healthandsafety@hackney.gov.uk](mailto:healthandsafety@hackney.gov.uk)



# PUPIL SUPPORT SERVICES

## Attendance Service

Hackney Education is proud of our record of working with schools to improve attendance rates. We work with you to identify the root causes of absence and support children back into school. We use our extensive experience in delivering strategic advice, pastoral support, casework and planning. As well as visiting schools, we work directly with individual pupils and parents to achieve regular school attendance.

Our traded packages support your school in delivering your duties under the new Department for Education guidance and means we can work together in a more tailored and bespoke way.

Product Code	Service	Price
14/ATT/005	Primary Attendance Service 1 Form Entry	£4,000
14/ATT/014	Primary Attendance Service 2-3 Form Entry	£5,950
14/ATT/017	Secondary Attendance Service	£11,900
14/ATT/016	Secondary Reduced Attendance Service	£5,950
14/ATT/015	Special School Attendance Service	POA

[www.hackneyservicesforschools.co.uk/categories/attendance](http://www.hackneyservicesforschools.co.uk/categories/attendance)

T: 020 8820 7288

E: [attendance.education@hackney.gov.uk](mailto:attendance.education@hackney.gov.uk)



# Integrated SEND Support

**Available to Hackney schools only**

Our 'team around the school' approach supports the development of skills and resources within each school. We work with you to develop your school's capacity to meet pupil needs through providing the following:

- EP and Specialist Teacher consultation, training, support and guidance
- Professional development opportunities that develop skill and confidence in SEND across your staff team
- Termly multi agency planning (MAP) meetings
- Support with data and analysis of your SEND population within the setting linked to provision management
- Advice around the graduated response and threshold for EHC needs assessments
- Guidance around developing special provision (i.e. provision that is different from or additional to that normally available to pupils or students of the same age, which is designed to help children and young people with SEN or disabilities to access the National Curriculum) within your setting

Our provision falls into banded categories, dependent on the level of each schools' notional SEN budget. The bandings are currently being reviewed and schools/settings will be notified of their banding and the support days they will receive. There is the opportunity to purchase additional days depending on the level of demand and staffing capacity

Product Code	Service	Price
40/SEN/007	Integrated SEND Bespoke Support and Training	POA
<b>Nursery School support</b>		
40/SEN/008	Integrated SEND Support Band G	£1,500
<b>Primary support</b>		
40/SEN/001	Integrated SEND Support Band A	£3,000
40/SEN/002	Integrated SEND Support Band B	£4,000
40/SEN/003	Integrated SEND Support Band C	£6,000
<b>Secondary support</b>		
40/SEN/004	Integrated SEND Support Band D	£8,000
40/SEN/005	Integrated SEND Support Band E	£12,000
40/SEN/006	Integrated SEND Support Band F	£15,000

[www.hackneyservicesforschools.co.uk/categories/integrated-send-service](http://www.hackneyservicesforschools.co.uk/categories/integrated-send-service)

T: 020 8820 7057

E: [sendbusinesssupport@hackney.gov.uk](mailto:sendbusinesssupport@hackney.gov.uk)

*“The support provided by specialist teachers is hugely beneficial to pupils and staff alike.”*

Debbie Ashton, SENCO, Grasmere Primary School



## Pupil Benefits

**Available to Hackney academies only**

We liaise with parents to determine their eligibility for free school meals and other benefits. We ensure that entitlements are processed quickly and efficiently, reducing costs in time and resources and delivering support as soon as possible.

Product Code	Service	Price
13/PBN/001	Administration of School Uniform Grants (per year)	£2,264+ £100 per voucher
13/PBN/002	Free School Meal Assessment and Pupil Premium Eligibility (per year)	£4,875
13/PBN/003	Free School Meals Assessment, Pupil Premium and Uniform Grant	£5,945 + £100 per voucher

[www.hackneyservicesforschools.co.uk/categories/pupil-benefits](http://www.hackneyservicesforschools.co.uk/categories/pupil-benefits)

T: 020 8820 7246

E: [pupilbenefits@hackney.gov.uk](mailto:pupilbenefits@hackney.gov.uk)

# ADDITIONAL PUPIL SUPPORT SERVICES

## Admissions

**Available to Hackney academies only**

Most parents see choosing a school as the most important decision they will make for their child's future. We work with settings to ensure you have objective and transparent admissions arrangements in place. Please visit the website for further details on the current offer.

From September 2025, there will be changes to the traded offer. Full details on pricing and delivery will be shared with academies.

[www.hackneyservicesforschools.co.uk/categories/admissions](http://www.hackneyservicesforschools.co.uk/categories/admissions)

T: 020 8820 7125

E: [admissions@hackney.gov.uk](mailto:admissions@hackney.gov.uk)



## School Transport

Purpose-built, safety checked and fully insured, all our vehicles are wheelchair accessible. All Drivers are DBS-checked, trained and qualified to drive. Available at competitive rates, we can meet all your needs, from school trips to conveying children with special needs.

Our reputation for safety and reliability is based on many years' experience of operating in London. All travel arrangements are customised to your requirements.

**[www.hackneyservicesforschools.co.uk/categories/transport](http://www.hackneyservicesforschools.co.uk/categories/transport)**

**T: 020 8558 4283**

**E: [transport@hackney.gov.uk](mailto:transport@hackney.gov.uk)**

## Speech and Language Therapy Services

Our Speech and Language Therapy Service has a reputation for providing high quality, innovative and flexible services. Our qualified and registered Speech and Language Therapists are skilled in identifying and supporting children and young people with speech, language and communication needs.

We have a range of whole school and whole class approaches that support the development of all students' communication skills as well as individual and group interventions that support students with more specialist needs.

**[www.gethackneytalking.co.uk](http://www.gethackneytalking.co.uk)**

**T: 020 7683 4262**

**E: [huh-tr.sltinfo@nhs.net](mailto:huh-tr.sltinfo@nhs.net)**





# Kench Hill Residential Centre

Kench Hill is Hackney Education's residential facility, set in the beautiful Kent countryside. It has provided inspirational outdoor education for Hackney schools for over 45 years. The core values are diversity, inclusion and nurture in the environment. On site activities include orienteering, shelter building, team games and stream walks.

The Centre holds the Learning Outside the Classroom (LOtC) Quality Badge. Discounted rates are offered to Hackney schools.

[www.hackneyservicesforschools.co.uk/categories/kench-hill](http://www.hackneyservicesforschools.co.uk/categories/kench-hill)

T: 01580 762073

E: [admin@kenchhill.co.uk](mailto:admin@kenchhill.co.uk)





## Children's Occupational Therapy Services

The Children's Occupational Therapy Service supports children aged 0–18 who have difficulties with everyday tasks due to a disability, developmental delay or co-ordination difficulty.

We offer advice and/or treatment working on developing children's ability to participate in everyday tasks such as washing, dressing, play, school based skills, community access and meal preparation.

**[www.homerton.nhs.uk/integrated-childrens-occupational-therapy-service](http://www.homerton.nhs.uk/integrated-childrens-occupational-therapy-service)**

**T: 020 7014 7025**

**E: [huh-tr.childrensotreferrals@nhs.net](mailto:huh-tr.childrensotreferrals@nhs.net)**

## Children's Physiotherapy Service

The Children's Physiotherapy Service works in partnership with schools to enable children with additional needs to access and participate in activities. Part of our approach includes providing advice and strategies to parents and schools to ensure children are able to participate in their school environment as independently as possible. In addition we offer specialist teaching packages which can be purchased by schools, children's centres and other settings.

### Support includes:

- Moving and handling training
- Inclusion of disabled students in PE and swimming
- Motor skill development
- Risk assessment skills

**[www.homerton.nhs.uk/childrens-physiotherapy-service](http://www.homerton.nhs.uk/childrens-physiotherapy-service)**

**T: 020 7014 7025**

**E: [huh-tr.childrenspreferrals@nhs.net](mailto:huh-tr.childrenspreferrals@nhs.net)**



# SCHOOL IMPROVEMENT SERVICES

## Primary and Secondary Support

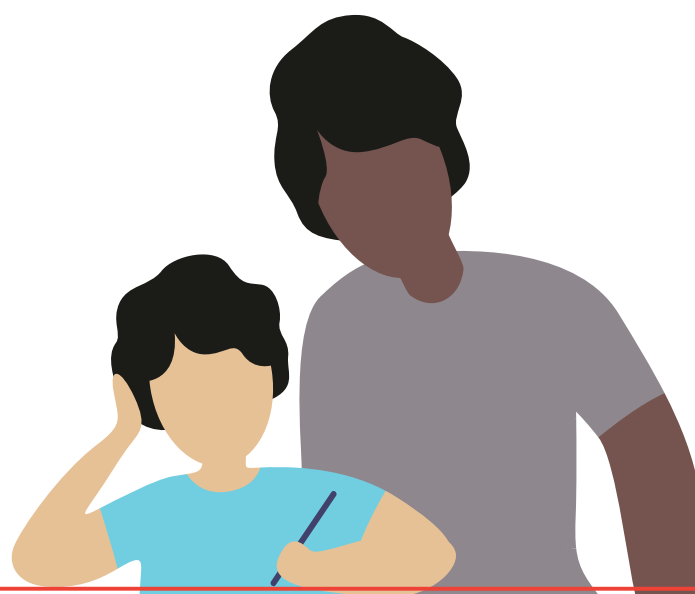
With a strong track record of success, our work in transforming education has gained national recognition. We offer experienced Leadership and Management Advisers at primary and secondary levels, all of whom have either worked as Headteachers or senior leaders in good or outstanding schools. They can deliver first class advice, support, training and evidence-informed challenge.

Product Code	Service	Price
10/LAM/001	Leadership and Management Bespoke Support	£718 per day
10/LAM/009	Headteacher Performance Management	£590
10/LAM/012	One Day Review	From £718
10/LAM/016	Cultural Competence Training	From £915
10/LAM/024	Whole School Curriculum Review (Primary Schools)	From £1,800
10/LAM/025	Individual Leadership Coaching Support	£900
10/LAM/027	SEF Surgery	£1,080
11/TAL/032	School Improvement Partner Programme (Free to Hackney Maintained Schools)	£3,240
11/TAL/017	Subject Audits	£570
11/TAL/018	Primary Teaching & Learning Bespoke Support	£570 per day
11/TAL/019	Secondary Teaching & Learning Bespoke Support	£570 per day
11/TAL/025	Subject Deep Dives	£850

[www.hackneyservicesforschools.co.uk/categories/primary-and-secondary-education](http://www.hackneyservicesforschools.co.uk/categories/primary-and-secondary-education)

T: 020 8820 7499

E: [school.improvement@hackney.gov.uk](mailto:school.improvement@hackney.gov.uk)



## Reading Programmes

Hackney Education has developed an award-winning portfolio of outstanding reading and literacy programmes used in over 800 schools in Trusts and Local Authorities and are internationally acclaimed and proven to deliver success across all key stages:

- Daily Supported Reading (DSR) for KS1 has a proven track record of success in raising school reading standards by developing children who build independence, thinking and understanding in reading right from the start
- Destination Reader (DR) in KS2 is a pedagogical approach to teaching reading through engaging daily, structured sessions that support children to read with greater understanding, enjoyment and purpose
- The LIT programme, KS3, supports struggling learners to develop their reading and literacy skills and access the wider curriculum
- Reading Moderation for KS1/KS2 is an innovative package designed to support the moderation of reading across your school, academy trust and borough. It builds knowledge and accuracy of judgements in reading attainment and progress and a deeper understanding of the complexities of assessing reading attainment

Product Code	Service	Price
11/TAL/016	Destination Reader (per school) – Key Stage 2	£2,665
11/TAL/047	Destination Reader Annual Subscription per school	£600
11/TAL/012	Destination Reader Refresher Training	£500
11/TAL/030	Year 1 Daily Supported Reading Programme – Key Stage 1	£2,665
11/TAL/034	Daily Supported Reading Subscription per school	£600
11/TAL/050	Refresher Training for Daily Supporting Reading	£500
11/TAL/039	Reading Moderation for KS1 & KS2	£450
11/TAL/015	The LIT Programme (Key Stage 3)	£2,500
11/TAL/061	The LIT Programme Annual Subscription per school	£500
11/TAL/063	The LIT Programme Refresher Training	£750

[www.hackneyservicesforschools.co.uk/categories/reading-programmes](http://www.hackneyservicesforschools.co.uk/categories/reading-programmes)

T: 020 8820 7607

E: [literacy@hackney.gov.uk](mailto:literacy@hackney.gov.uk)



*“While the levels of attainment are excellent, I think other benefits are equally as important. Numbers aside, the visible improvements in students’ overall confidence and feelings towards reading are extremely rewarding, especially as such positivity continues into Year 8 and beyond.”*

Sam Henstock, LIT coordinator, Ashfield School

## Post-16

We offer a range of Post-16 services customised to meet school sixth forms and colleges’ needs. Our services are designed to improve teaching and learning in academic and vocational subjects and improve the quality of leadership and management.

Product Code	Service	Price
24/CPD/015	Post-16 Complete Service Package	£9,685
24/CPD/018	Post-16 Network Only Package	£3,375
24/CPD/019	AS/A Level Revision Classes	POA
24/CPD/020	Post-16 Moderation	£130 per unit
11/TAL/060	Post-16 Teaching & Learning Support	£570 per day
10/LAM/019	Sixth Form Leadership and Management Support	£718 per day

[www.hackneyservicesforschools.co.uk/categories/post-16-education](http://www.hackneyservicesforschools.co.uk/categories/post-16-education)

T: 020 8820 7162

E: [school.improvement@hackney.gov.uk](mailto:school.improvement@hackney.gov.uk)



## Governance Services

Governance is becoming more complex, requiring greater accountability of educational, operational and financial performance and management of key risks. With extensive experience of school leadership and governance, our team can offer reliable and trusted guidance and support.

We are able to offer specialist support in managing exclusions and complaints panel hearings.

Product Code	Service	Price
04/GOV/001	Governance Helpline* (to be purchased alongside the clerking package)	£1,045
04/GOV/009	Additional Clerking Sessions (e.g. exclusions, complaints panel hearings, Independent Review Panels etc.)	£470 per meeting
04/GOV/026	Governor Bespoke Support	£718 per day
04/GOV/027	Governance Support and Clerking Package 1–5 meetings	£420 per meeting
04/GOV/028	Governance Support and Clerking Package 6–12 meetings	£400 per meeting
04/GOV/029	Governance Support and Clerking Package 13+ meetings	£380 per meeting

\*Includes membership to the National Governors Association

[www.hackneyservicesforschools.co.uk/categories/governance-services](http://www.hackneyservicesforschools.co.uk/categories/governance-services)

T: 020 8820 7369

E: [governorservices@hackney.gov.uk](mailto:governorservices@hackney.gov.uk)

*“We’ve been very impressed by the professional service, support and clerking offered by Governor Services at [Hackney Education].”*

Tim Wilson, Headteacher, Sir John Cass Primary School,  
City of London



## Music Services

Our Music Service is responsive and flexible, with talented teachers, and partnerships with world-class national, regional and local ensembles, organisations and groups.

We offer advice on curriculum, support in monitoring progress in music for all and opportunities to nurture and develop young musical talent through frequent major performances in public venues. All our music tutors are DBS checked and quality assured.

Product Code	Service	Price
18/MUS/016	Introductory Whole Class Instrumental Tuition	£2,460
18/MUS/017	Whole Class Instrument Taster (for instruments already in place)	£1,025
18/MUS/018	Music Festivals	From £55
18/MUS/024	West African Drumming & Dance Residency	£2,600
18/MUS/027	Performers in Schools (Primary and Secondary schools)	From £100
18/MUS/028	Instrumental/Vocal Tuition – (Hackney schools only)	From £41.50 per hr
18/MUS/012	In-School Ensemble Provision	From £43.50 per hr
18/MUS/032	Instrument Loan Scheme (Hackney Primary, Secondary and Academies schools only)	POA

[www.hackneyservicesforschools.co.uk/categories/music-service](http://www.hackneyservicesforschools.co.uk/categories/music-service)

T: 020 3076 1534

E: [musicservice@hackney.gov.uk](mailto:musicservice@hackney.gov.uk)



## Early Years Support

Our intensive in-school support and bespoke training helps leaders to implement the principles of good practice in the management of staff, undertake effective data analysis, establish effective EYFS evaluation processes and deliver successful action plans.

Product Code	Service	Price
27/EYS/009	Early Years Consultancy	From £485 per day

[www.hackneyservicesforschools.co.uk/categories/early-years-education](http://www.hackneyservicesforschools.co.uk/categories/early-years-education)

T: 020 8820 7037

E: [earlyyears@hackney.gov.uk](mailto:earlyyears@hackney.gov.uk)

## Hackney Forest School

Early years settings and primary schools can take part in engaging sessions in our beautiful landscaped garden near the canal on Hackney Marshes. Our expert staff will plan the sessions with your input to cater for the needs of the children, and/or the topic learning objective you have in mind.

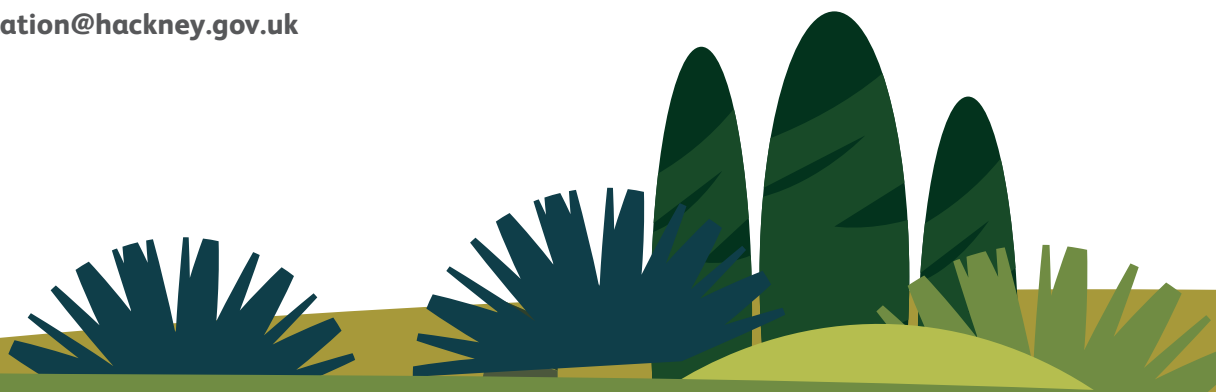
Those taking part in the Forest School will have experiences like never before, in an exciting and unfamiliar natural setting – a precious asset in urban London. Sessions are available for school groups of all ages and for adult team building sessions, a great way to reward and motivate your team. To find out more, look at photos and case studies on our website [www.hackneyforestschool.co.uk/web](http://www.hackneyforestschool.co.uk/web)

Product Code	Service	Price
29/FOR/001	Hackney Forest School Six Week Sessions	£630
29/FOR/003	Hackney Forest School Taster Days	£105
29/FOR/004	Hackney Forest School Consultancy	From £465

[www.hackneyservicesforschools.co.uk/categories/hackney-forest-school](http://www.hackneyservicesforschools.co.uk/categories/hackney-forest-school)

T: 020 8986 7437

E: [bookings.education@hackney.gov.uk](mailto:bookings.education@hackney.gov.uk)





# ADDITIONAL SCHOOL IMPROVEMENT SERVICES

## Primary and Secondary Careers and Employability

The Careers Collaborative is an initiative that aims to ensure statutory duties around careers education information advice and guidance are met or exceeded. It is hosted and coordinated by Hackney Education but supports schools across London through online delivery.

Members recognise that high quality careers education and advice will be vital to help students make good progression decisions. Evidence shows that employers are increasingly likely to look at the skills and understanding of the world of work, developed in school when making recruitment decisions.

**[www.hackneyservicesforschools.co.uk/product/careers-collaborative](http://www.hackneyservicesforschools.co.uk/product/careers-collaborative)**

**T: 020 8820 7499**

**E: [school.improvement@hackney.gov.uk](mailto:school.improvement@hackney.gov.uk)**

## Resources

We offer a series of Religious Education Teaching and Learning Webinar Resources for schools, allowing flexibility about how and when they are used – for whole staff training all year round, or shared with individual staff and new teachers joining the school. Subjects include Introducing Buddhism and Hinduism and What is Alevism and Why Should We Teach It?

**[www.hackneyservicesforschools.co.uk/categories/webinars](http://www.hackneyservicesforschools.co.uk/categories/webinars)**

**T: 020 8820 7499**

**E: [school.improvement@hackney.gov.uk](mailto:school.improvement@hackney.gov.uk)**



# PROFESSIONAL TRAINING

## Continuing Professional Development (CPD)

Our professional development programmes draw upon the educational expertise of Hackney schools, Hackney's School Improvement Team, and reputable authors and researchers.

We recognise that effective professional development extends beyond building knowledge; it also serves as a catalyst for motivation, refining teaching techniques, and seamlessly embedding best practices into daily pedagogical and operational approaches. Rooted in evidence and fortified by our success in Hackney and beyond, we actively support the growth of Governors, teachers, leaders, and support staff. We always ensure that our training is tailored to the unique context and needs of the schools we serve.

Schools can acquire packages of courses, which are made available online and in our printed brochure by Easter, ready for the upcoming academic year.

For the most up-to-date list of our diverse range of courses, please visit our website.

[www.hackneyeducation.bookinglive.com](http://www.hackneyeducation.bookinglive.com)

T: 020 8356 2221

E: [cpdadmin@hackney.gov.uk](mailto:cpdadmin@hackney.gov.uk)

## Early Career Teachers (ECT) Support

From September 2024, Hackney Education will no longer function as an Appropriate Body (AB). For those who would like to stay local, Hackney Education has been working in partnership with the East London Teaching School Hub (ELTSH). Find out more about **ELTSH's Appropriate Body offer**. ELTSH are also working with the DfE and national Teaching School Hubs network to determine how we can work collegiately with local partners to retain local knowledge and expertise when they become the sole AB local provider from September 2024. Find out more about what **ELTSH** is doing to support our transitioning schools.

[www.hackneyservicesforschools.co.uk/categories/appropriate-body-service](http://www.hackneyservicesforschools.co.uk/categories/appropriate-body-service)

T: 020 8356 2221

E: [cpdadmin@hackney.gov.uk](mailto:cpdadmin@hackney.gov.uk)



## HOW TO ORDER



You'll find information about all of our products and services here  
[www.hackneyservicesforschools.co.uk](http://www.hackneyservicesforschools.co.uk)

Orders for our services can be placed in 3 ways:

1. Online using our services for schools website
2. Send an email to [s4s@hackney.gov.uk](mailto:s4s@hackney.gov.uk) stating the name of the service, product code, quantity and price
3. Download an order form from the website, complete and send it to the above email address

For general enquiries, new accounts, please email our services for schools team at [s4s@hackney.gov.uk](mailto:s4s@hackney.gov.uk) or call **020 8820 7566**.

## CPD BOOKING INFORMATION



For CPD course bookings, please visit our CPD booking portal  
[www.hackneyeducation.bookinglive.com](http://www.hackneyeducation.bookinglive.com) and log in to your account.

If you have any CPD course queries, please contact the relevant CPD team below

For primary, secondary and governance course bookings  
email [cpdadmin@hackney.gov.uk](mailto:cpdadmin@hackney.gov.uk) or call **020 8356 2221**

For Early Years settings and Childminders course bookings  
email [earlyyears.admin@hackney.gov.uk](mailto:earlyyears.admin@hackney.gov.uk) or call **020 3076 1514**

### Note:

All prices listed are correct at the time of publishing. However, Hackney Education reserves the right to amend prices from time to time. Up-to-date prices will be posted on the Services for Schools website or available upon request. Prices exclude VAT and apply from 1 April 2024 to 31 March 2025.

Terms and Conditions apply to all services purchased from Hackney Education.



[www.hackneyservicesforschools.co.uk/content/terms-and-conditions-ordering](http://www.hackneyservicesforschools.co.uk/content/terms-and-conditions-ordering)

Notes:

Handwriting practice area consisting of 20 horizontal dotted lines.



Services for Schools  
Hackney Education



[www.hackneyservicesforschools.co.uk](http://www.hackneyservicesforschools.co.uk)

T: 020 8820 7566

E: [s4s@hackney.gov.uk](mailto:s4s@hackney.gov.uk)